

**PRODUCT SERIES**  
**Styropek® Ultrapek**



# PRODUCT SERIES

## Styropek® Ultrapek

### Grey XEPS with PCR Content & Enhanced Insulation

At **Styropek®**, we are committed to building a better and more sustainable future for generations to come. In line with this vision and upholding the highest quality standards, we have developed the **Styropek® Ultrapek** product family, which is grey XEPS with PCR content with enhanced insulation products, designed to have similar performance compared to standard **Styropek®** EPS Modified products. \*PCR : Post Consumer Resin

#### Products:

**Styropek® Ultrapek** PG50B Regular Material for Shape and Cold Chain Applications with Graphite and 50% PCR content.

**Styropek® Ultrapek** FG30A Modified Material for Fire Retardant Block Applications with Graphite and 30% PCR content.

### Recycle content will be SCS Certified

#### Attributes (Table 1):

Property	Units	PG50B	FG30A
Total Recycle Content	wt%	50	30
Minimum PCR	wt%	30	30
Bead Size, >95%	Mm	0.7 - 1.1	0.9 - 1.3
Pentane	wt%	4 - 5	4 - 5
Color	Visual	Grey	Grey
Application		shape / cold chain	FR Block

#### Processing (Table 2):

Requirement	PG50B	FG30A
MAD single pass batch (fresh Pre-puff), pcf	1.08	0.93
MAD final part, pcf	1.20	0.98

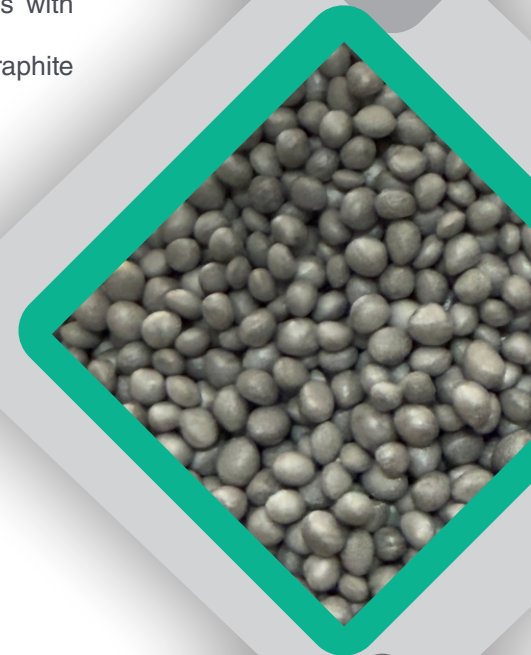
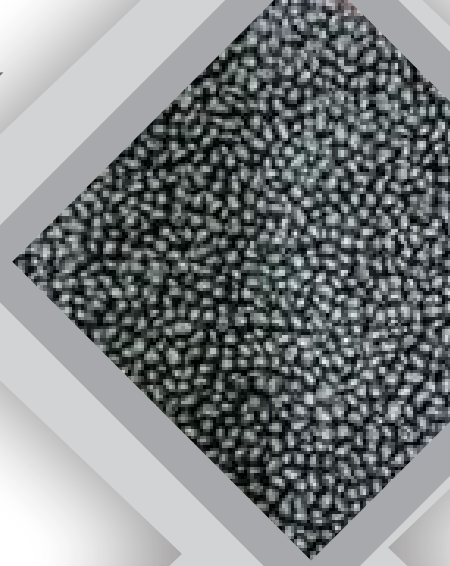
## Styropek® Ultrapek PG50B

DATA SUBMISSION TEMPLATE - RECYCLED CONTENT RESIN  
PHYSICAL PROPERTIES

#### BACKGROUND

EPS Resin grade	PG50B
Recycled content (%)	50

ASTM C578 Classification	Type I	Type VIII	Type II	Type IX
Density range, pcf	0.9 - 1.15	1.15 - 1.35	1.35 - 1.8	1.8 - 2.4
Average density, pcf	1.025	1.25	1.575	2.1



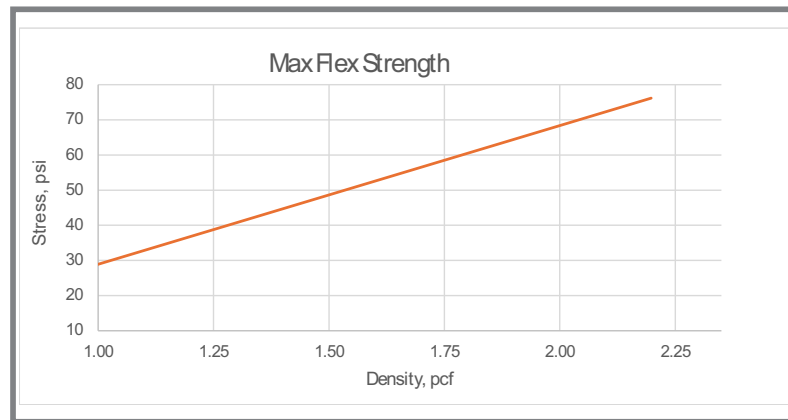
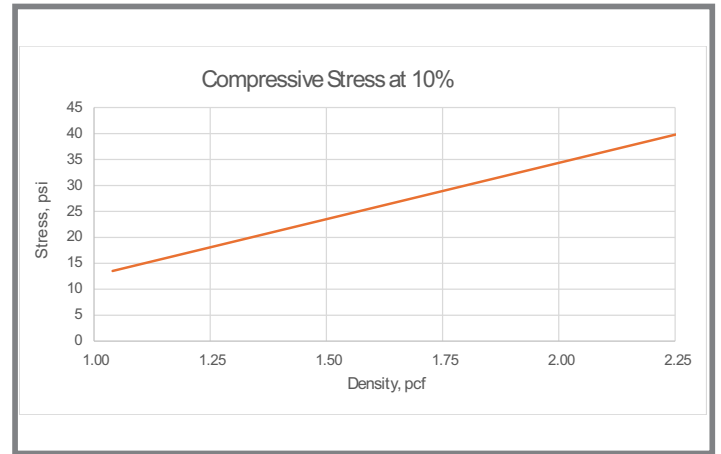
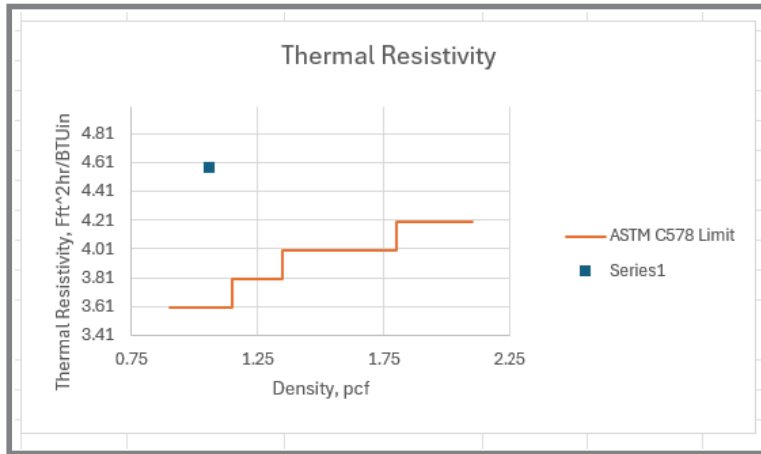
# PRODUCT SERIES

## Styropek® Ultrapek

Styropek®  
Ultrapek PG50B

### Grey XEPS with PCR Content & Enhanced Insulation

Test method	Specimen density, pcf	Test Value	ASTM C578 Classification
Thermal resistivity, Ft <sup>2</sup> hr/BTUin	1.06	4.57	I
Compressive stress at 10 %, psi	1.1	13.1	I
Compressive stress at 10 %, psi	1.7	25.4	II
Max Flexural strength, psi	1.0	30.4	I
Max Flexural strength, psi	1.1	34.9	I
Max Flexural strength, psi	2.2	75.9	IX



## Styropek® Ultrapek FG30A

DATA SUBMISSION TEMPLATE - RECYCLED CONTENT RESIN PHYSICAL PROPERTIES

### BACKGROUND

EPS Resin grade	FG30A
Recycled content (%)	30

# PRODUCT SERIES

## Styropek® Ultrapek

Styropek®  
Ultrapek FG30A

### Grey XEPS with PCR Content & Enhanced Insulation

ASTM C578 Classification	Type I	Type VIII	Type II	Type IX
Density range, pcf	0.9 - 1.15	1.15 - 1.35	1.35 - 1.8	1.8 - 2.4
Average density, pcf	1.025	1.25	1.575	2.1

Test method	Specimen density, pcf	Test Value	ASTM C578 Classification
Thermal resistivity, Ft <sup>2</sup> hr/BTUin	1.07	4.5	I
Compressive stress at 10 %, psi	1.66	25.4	II
Compressive stress at 10 %, psi	1.07	13.1	I
Max Flexural strength, psi	1.71	53.7	II
Max Flexural strength, psi	1.01	27.2	I

